

**A152.8FG Series**  
**Barrier Free, Wall Mounted Electric Drinking Fountain**



A152408F-FG / A152408S-FG & A152408F-FG-RBL / A152408S-FG-RBL

**TECHNICAL ASSISTANCE TOLL FREE TELEPHONE NUMBER:**  
**1.800.743.8259**

Technical Assistance E-Mail: [Fieldservice@acorneng.com](mailto:Fieldservice@acorneng.com)

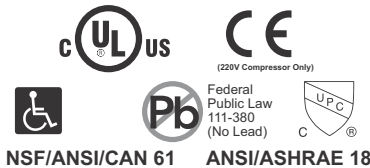
**NOTES TO INSTALLER:**

1. Please leave this documentation with the owner of the fixture when finished.
2. Please read this entire booklet before beginning the installation.
3. Check your installation for compliance with plumbing, electrical and other applicable codes.

For current Warranty click hyperlink [Product Warranty](#) or visit: [www.murdockmfg.com/terms-and-warranty](http://www.murdockmfg.com/terms-and-warranty)

Murdock<sup>®</sup> assumes no responsibility for use of void or suspended data. © Copyright Murdock<sup>®</sup>, City of Industry, CA Member of Morris Group International<sup>®</sup>. Please visit [www.murdockmfg.com](http://www.murdockmfg.com) for most current specifications.

COMPLIES WITH  
**STANDARDS**



**murdock**<sup>®</sup>  
SINCE 1853

Member of  
  
MORRIS GROUP  
INTERNATIONAL

15125 Proctor Ave.  
City of Industry, CA  
91746 U.S.A.  
Phone 800-453-7465  
626-333-2543

[www.murdockmfg.com](http://www.murdockmfg.com)

**IMPORTANT**

This fixture is intended to dispense water that has been lowered in temperature, but otherwise remains unchanged by the materials in the water cooler. It is common for electrical equipment to be grounded to water lines either within a structure or away from it. Every attempt should be made to prevent this kind of grounding from generating electrical feedback into the water cooler creating electrolysis. Electrolysis will cause a metallic taste or cause water metal content to increase.

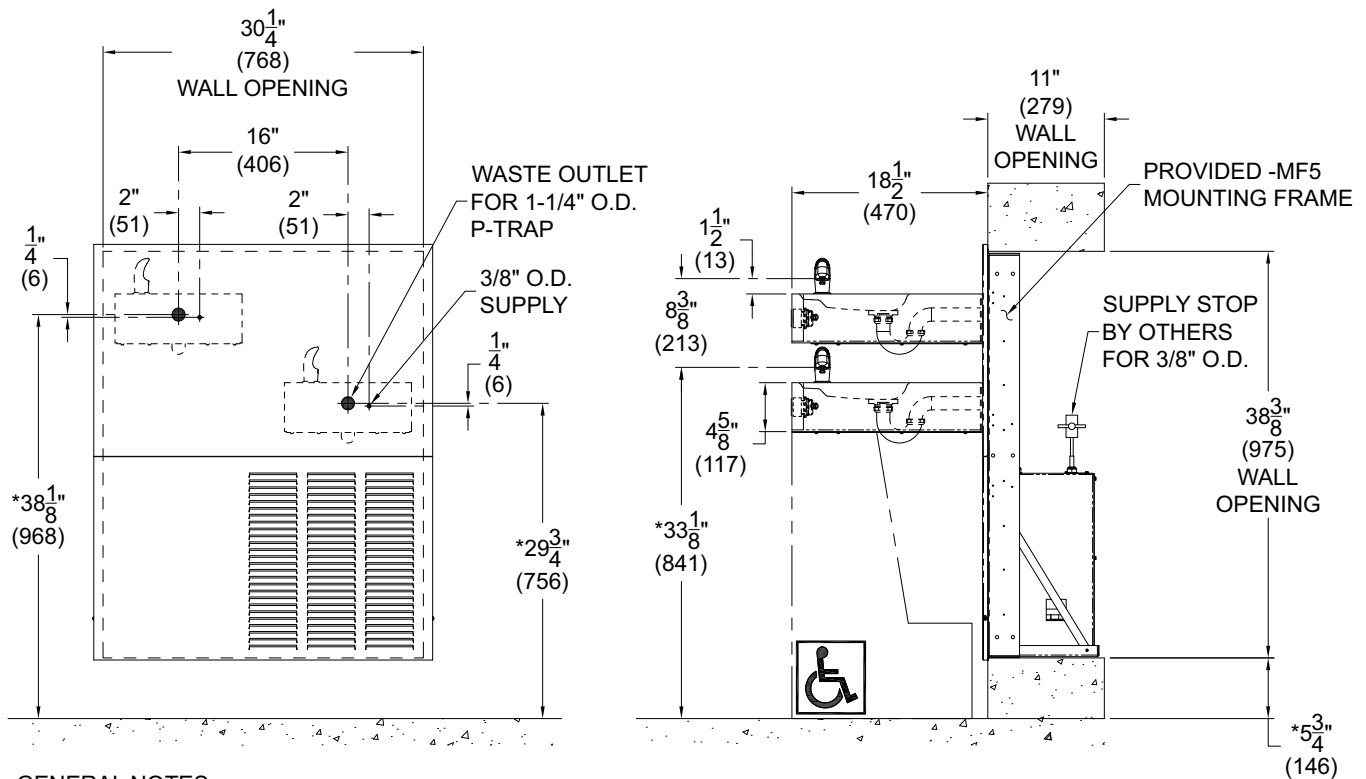
**NOTICE**

A dielectric coupling must be used to connect the water cooler to the water supply. A nonmetallic coupler is furnished with this water cooler to meet this requirement.

**ROUGHING-IN AND DIMENSIONAL DRAWING**

Prior to roughing consult with local, state, and federal codes for proper mounting height.

**A152408S-FG & A152408F-FG Refrigerated Bi-Level Wall Mounted Drinking Fountain**

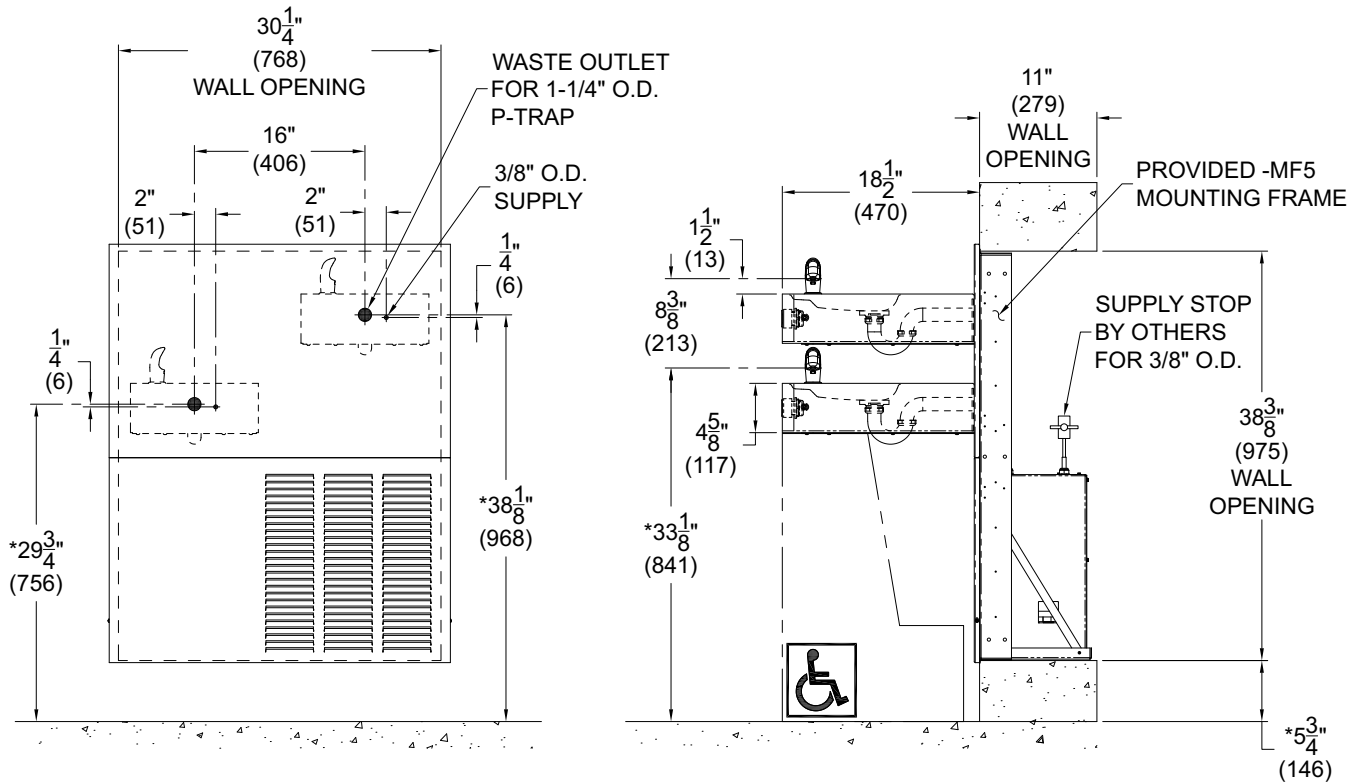


**GENERAL NOTES:**

1. ALL DIMENSIONS ARE IN INCHES (MM).
- \*2. DIMENSIONS SHOWN ARE FOR RECOMMENDED ADULT HEIGHT. ADJUST VERTICAL DIMENSIONS AS NECESSARY TO COMPLY WITH FEDERAL, STATE, & LOCAL CODES.
3. WATER FROM CHILLER TO FOUNTAIN SHOULD BE COVERED WITH A SPONGE FOAM RUBBER OR ICE WATER TYPE INSULATION OF ADEQUATE THICKNESS.

**NOTES:** Dimensions shown for Adult ADA compliant installation. For Child ADA compliant parallel approach installation, decrease height of installation by 3 inches. Provide clear floor space as required. Adjust vertical dimensions as required to comply with federal, state, and local codes.

**A152408S-FG & A152408F-FG Refrigerated Reverse Bi-Level Wall Mounted Drinking Fountain**



**NOTES:** Dimensions shown for Adult ADA compliant installation. For Child ADA compliant parallel approach installation, decrease height of installation by 3 inches. Provide clear floor space as required. Adjust vertical dimensions as required to comply with federal, state, and local codes.

**PRIOR TO INSTALLATION:**

Important: Some options may slightly alter installation. To ensure proper installation review the manual thoroughly and verify rough-ins before beginning any work. File this manual with the owner or maintenance personnel upon completion of installation.

- Fixture mounting requirements: industry standard wall construction, adequate to support the fixture and installer provided wall anchors sufficient to secure the fixture.
- Receptacle(s) must be wired to a GFCI protected circuit. Fixture must be earth grounded per NEC (National Electrical Code).
- Inspect fixture and all parts from damages and all parts are bolted on.

**IMPORTANT:**

1. Waste P-trap, Water supply Service Angle Stop Valve and 2" x 4" Electrical GFCI Plug-In Receptacle, if required, to be supplied by installer in accordance with local codes.
2. Provide 4" minimum clear space on fixture sides to allow for proper ventilation through cabinet louvers.
3. Water supply inlet is 3/8" Outer Diameter copper tube. Waste is 1-1/4" outer diameter.
4. Completely flush supply lines of all foreign debris before connecting to fixture. Water cooler is designed to not cause problems with taste, odor, color, or sediment. Optional water filter (WF1), is available should any of these problems arise from the water supply.
5. **DO NOT** solder tubes inserted into the coupler as damage to the o-ring may result.
6. All burrs must be removed from outside of cut tubes before inserting into strainer or other components.
7. Power supply must be identical in voltage, cycle and phase to that specified on the chiller data plate. Electrical outlet and furnished power cord with plug must be used to supply power to fixture. **DO NOT** wire compressor directly to the power supply.
8. This unit must be grounded per the requirements of applicable electrical codes.
9. **WARNING:** Warranty is voided if installation is not made following current Acorn Engineering installation instructions and if components are assembled to the fixture that are not approved by Acorn Engineering.
10. Fixture is to operate within a water pressure range of 20 PSIG (138 kPa) to 105 PSIG (724 kPa). Warranty is void if the unit is allowed to operate outside the range of 20 PSIG (138 kPa) to 105 PSIG (724 kPa). **Consult with UPC and local codes for maximum allowable water pressures.**
11. Due to cold waste water, Acorn Engineering recommends that p-trap be insulated to prevent excessive condensation.
12. ***Per UPC 609.10 - All building water supply systems in which quick acting valves are installed shall be provided with devices to absorb the hammer caused by high pressure resulting from the quick closing of the valve. These pressure-absorbing devices shall be approved mechanical devices. Water pressure-absorbing devices shall be installed as close as possible to the quick closing valve.***
13. ***609.10.1 Mechanical Devices. Where listed mechanical devices are used, the manufacturer's specifications as to location and method of installation shall be followed.***

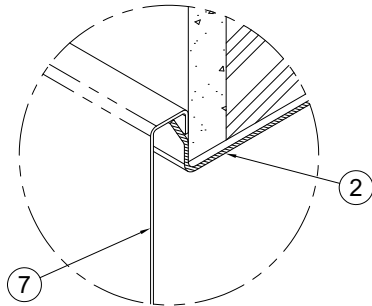
**CLEANING & MAINTENANCE GUIDE:**

1. Motors have lifetime lubrication and do not require scheduled maintenance.
2. Excess dirt or poor ventilation will cause the compressor overload protector to turn the compressor off and it will cycle on and off with no cold water coming out of bubbler. Periodically clean with vacuum cleaner, air hose or brush the condenser fins and cabinet ventilation louvers. In environments where dirt and dust is more prevalent, clean more frequently.
3. Periodically remove fountain top and clean out "Y" strainer.
4. **DO NOT** use harsh chemicals, abrasive or petroleum based cleaners. Use of these will void the Acorn Engineering warranty.
5. Exterior panels can be cleaned using mild household detergents or warm, soapy water. Extra care must be used cleaning chrome plated items and mirror finished stainless steel. They can scratch easily and should only be cleaned using a clean, soft cloth and mild soap with water or a mild glass cleaner.

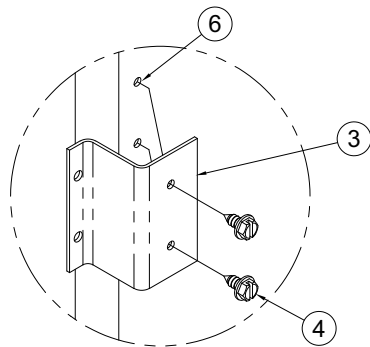
**-MF5 INSTALLATION FOR A152408S-FG & A152408F-FG**

**NOTES:**

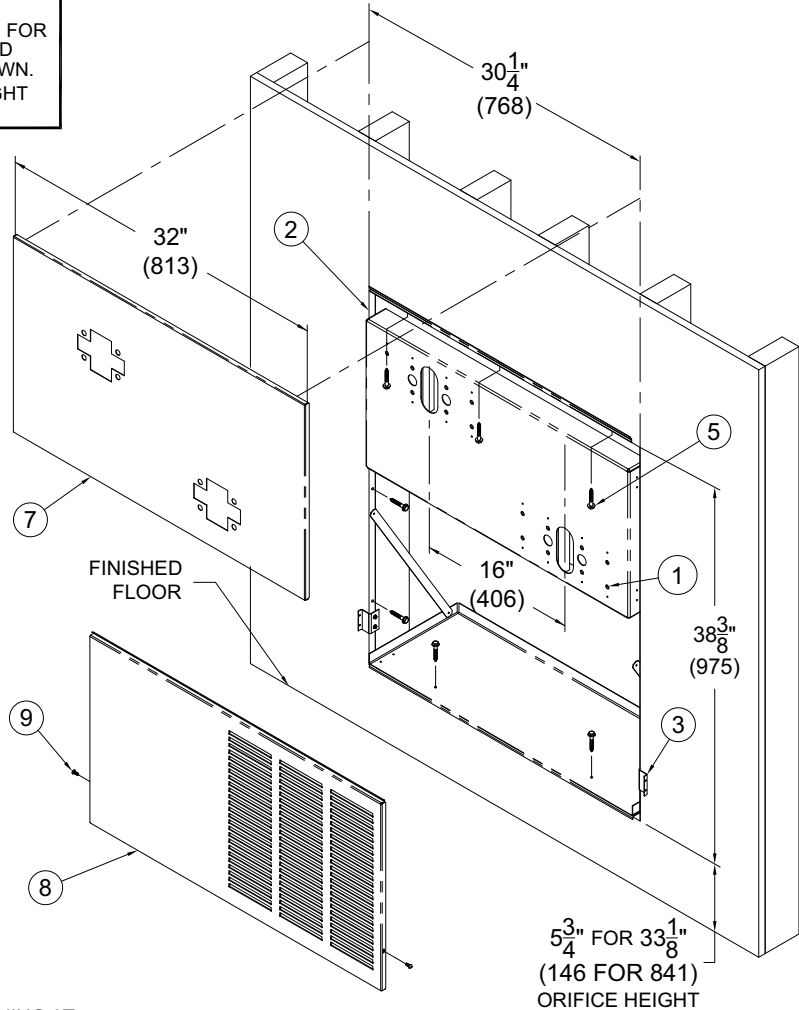
- 1- STANDARD BI-LEVEL INSTALLATION IS SHOWN. FOR REVERSE BI-LEVEL MF9 MOUNTING FRAME AND TOP TRIM PANEL ARE OPPOSITE TO THAT SHOWN.
- 2- CHILLER INSTALLATION IS ALWAYS ON THE RIGHT HAND SIDE OF THE SHELF.



**ENGAGEMENT DETAIL**



**ANCHORING CLIP DETAIL**



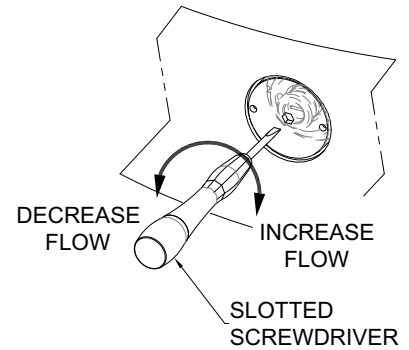
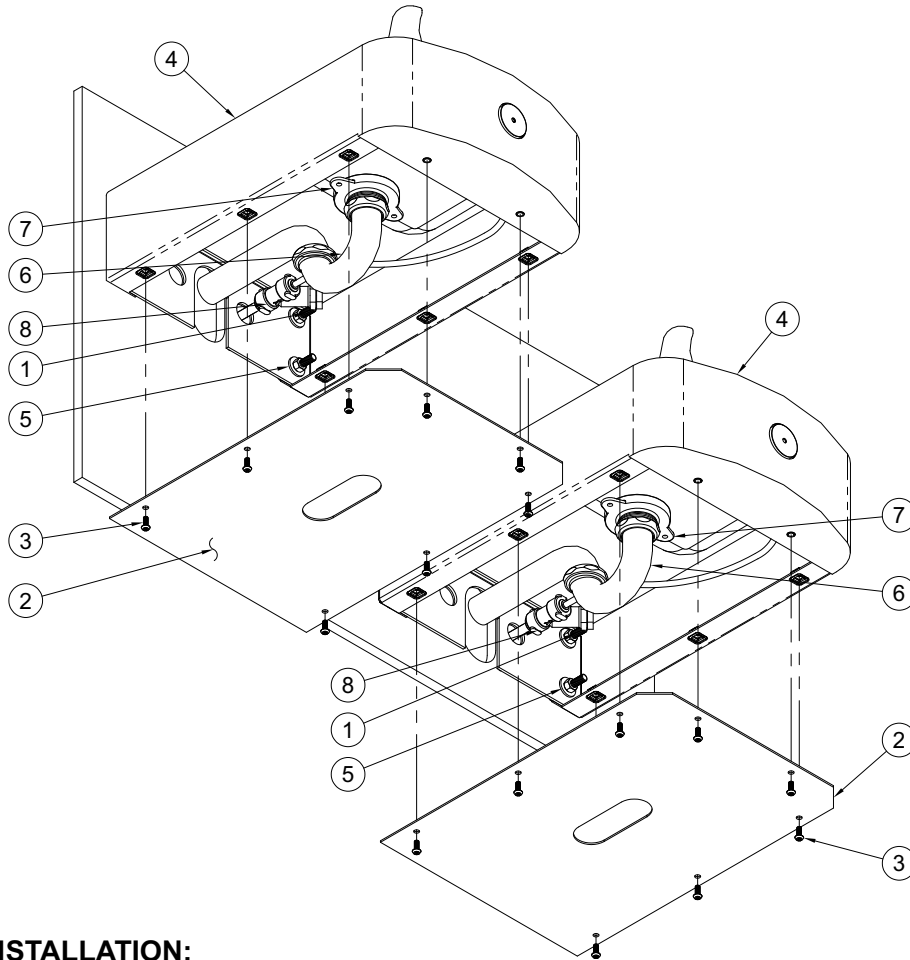
**INSTALLATION INSTRUCTIONS:**

- A- PROVIDE 30-1/4" WIDE x 38-3/8" TALL WALL OPENING AT APPROPRIATE HEIGHT. PROVIDE STRUCTURAL SUPPORT AROUND INSIDE OF THE OPENING FOR FRAME ANCHORING.
- B- CAREFULLY REMOVE FRAME (2), PANEL ANCHORING CLIPS (3) AND SCREWS (4) FROM PACKAGING PREVENTING DAMAGE.
- C- CENTER FRAME (2) WITHIN WALL OPENING WITH SIDE, TOP AND BOTTOM LIPS OVERLAPPING OUTSIDE THE OPENING UP AGAINST FINISHED WALL FACE. SET CHILLER SHELF IN PLACE ALIGNING ANCHORING HOLES WITH HOLES IN FRAME BOTTOM. SECURE TO WALL THROUGH THE SIDES, TOP AND BOTTOM USING HARDWARE (5) BY OTHERS ENSURING 16" CENTERLINE DIMENSION LEFT-TO-RIGHT.
- D- INSTALL TWO ANCHORING CLIPS (3) AT BOTTOM ON OUTER SIDES OF FRAME (2) ALIGN HOLES IN CLIPS WITH HOLES (6) IN FRAME AND USE SHEETMETAL SCREWS (4) PROVIDED. SEE ANCHORING CLIP DETAIL.

- E- WHEN THEY ARRIVE, CAREFULLY REMOVE THE TRIM PANEL (7) AND LOUVERED PANEL (8) WITH SCREWS (9) FROM THE PACKAGING PREVENTING SCRATCHING AND DAMAGE.
- F- TRIM PANEL (7) INSTALLS BY ENGAGING OVER TOP JOGGLED OUT FRAME (2) FLANGE AS SHOWN IN ENGAGEMENT DETAIL.
- G- ASSEMBLY OF DRINKING FOUNTAINS THROUGH TRIM PANEL (7) INTO MOUNTING POINTS (1) HELPS SECURE PANEL.
- H- LOUVERED PANEL (8) INSTALLS AFTER CHILLER & FOUNTAIN INSTALLATION IS COMPLETED. TOP OF LOUVERED PANEL (8) SLIPS UNDERNEATH TRIM PANEL (7) ENGAGE SCREWS (9) INTO ANCHORING CLIPS (3) THROUGH LOUVERED PANEL (8) & TRIM PANEL (7) TO SECURE.

**NOTES:** Dimensions shown for Adult ADA compliant installation. For Child ADA compliant parallel approach installation, decrease height of installation by 3 inches. Provide clear floor space as required. Adjust vertical dimensions as required to comply with federal, state, and local codes.

**A152408S-FG & A152408F-FG ASSEMBLY**



**FLOW ADJUSTMENT**

**INSTALLATION:**

- A- INSTALL -MF5 CHILLER AND DRINKING FOUNTAIN WALL MOUNTING FRAME FOLLOWING THE INSTRUCTIONS ON PREVIOUS PAGE.
- B- VERIFY FRAME CHILLER SHELF IS SECURE AND INSTALL THE CHILLER FOLLOWING THE INSTRUCTIONS INCLUDED WITH THE CHILLER.
- C- HANG UPPER TRIM PANEL ON MOUNTING FRAME.  
**NOTE:** THE INCLUDED 1" BRACKETS DO NOT GET USED WITH THIS INSTALLATION AND THE PLASTIC SPACERS ARE TYPICALLY NOT REQUIRED AND CAN BE DISCARDED.
- D- INSTALL THE FOUR THREADED STUDS ① INTO THE WALL MOUNTING FRAME.
- E- REMOVE THE DRINKING FOUNTAIN BOTTOM ACCESS PANEL ②. SET THE ACCESS PANEL ASIDE IN A SAFE PLACE WHERE IT WILL NOT BE DAMAGED AND PLACE THE SCREWS ③ IN A SECURE LOCATION WHERE THEY WILL NOT BE LOST.
- F- SLIDE FIXTURE ④ OVER STUDS ① AND SECURE WITH NUTS AND WASHERS ⑤.
- G- ASSEMBLE P-TRAPS ⑥ TO DRAIN ADAPTERS ⑦ ON EACH UNIT AND MAKE-UP 1-1/4" OUTER DIAMETER WASTE CONNECTIONS.
- H- AFTER THOROUGHLY FLUSHING THE 3/8" OUTER DIAMETER SUPPLY LINE, CONNECT WATER SUPPLY TO IN-WALL CHILLER AND PROVIDE CONNECTION FROM CHILLER TO DRINKING FOUNTAIN IN-LINE STRAINER ⑧.
- I- REASSEMBLE ACCESS PANEL ① TO UNIT WITH SCREWS PREVIOUSLY REMOVED.

**START UP:**

1. Before connecting power supply, but after thoroughly flushing the supply line and connecting it to the cooler, turn on building water supply and check all connections for leaks.
2. Air within the drinking fountain system or the structure supply piping will cause an irregular bubbler outlet stream until purged out by incoming water. Covering the bubbler with a clean cup (or similar object) is recommended when first activating drinking fountain to prevent excessive splashing. Depress the pushbutton until steady water stream is achieved.
3. If water flow requires adjustment, insert a slotted narrow blade screwdriver in the hole centered of the pushbutton, for -Sensor Operated units on the underside of the fixture in the knee clearance area up to the flow regulator. Turning clockwise will increase flow and turning counterclockwise will decrease flow.
4. Recheck all water connections with water flowing through system.
5. With power still **NOT** connected, carefully manually rotate cooling fan to ensure proper clearance and free fan action.
6. Provide power to water chiller and make sure unit begins to function.
7. Assemble louvered bottom trim panel with screws provided to brackets on either side of wall mounting frame.

**TROUBLE SHOOTING:**

**IMPORTANT: BEFORE MAKING ANY OF THE REPAIRS LISTED, MAKE SURE THE WATER CHILLER IS DISCONNECTED FROM THE ELECTRICAL SUPPLY AND THE WATER SUPPLY VALVE IS SHUT OFF.**

1. Adjustments:
  - Cartridge** – The water flow can be adjusted using a slotted narrow blade screwdriver and turning clockwise to increase flow and counterclockwise to decrease flow.
  - Cold Water Thermostat** – The water temperature can be adjusted using a slotted screwdriver and turning clockwise to make colder and counterclockwise to make warmer.
  - Bubbler Stream** - Bubbler can be rotated slightly to direct the stream backwards or forwards. Adjust the stream to minimize splashing. Splashing may occur from bubbler stream if the unit is not level. Shim lower mounting point, if necessary, to level chiller.
2. Compressor Does Not Run:
  - a. Check the electrical supply for power and correct voltage. The incoming voltage must be within 10% of the rated voltage on the serial nameplate.
  - b. If the cold thermostat capillary bulb loses its charge or becomes kinked it will fail in the open position causing a disruption of power to the compressor. Disconnect electrical supply to the water chiller and using an ohm meter check for continuity across the two electrical terminals on the thermostat. Install a new thermostat if there is no continuity.
  - c. Check for loose wires within the compressor box. The incoming power leads must be connected to the overload and relay.
  - d. If all components check positive for continuity then test the wiring harness plug for continuity to see if there is a broken wire within the wiring harness insulation.

3. Compressor Runs – Water Is Warm:

- a. The most common cause for a water chiller to run without producing cold water is a loss of refrigerant. The water chiller must be taken to a certified refrigerant technician for repairs.
- b. Make sure the condenser fan motor is operative. The fan blade must turn freely to help remove the heat of compression.
- c. An incorrect refrigerant charge, restriction or defective compressor (not pumping) will also cause the compressor to run without producing cold water. All these signs indicate a problem within the refrigeration system and the water chiller must be checked by an authorized service company.

4. Compressor Cycling On Overload Protector:

- a. A dirty condenser or a blocked fan will cause a high head pressure and frequent cycling of the overload protector.
- b. Check the incoming voltage to make sure it is within 10% of the serial nameplate rating.
- c. A restriction or moisture in the system will also cause intermittent cycling. A certified refrigeration mechanic should be contacted in this situation.
- d. Change the overload or relay if defective.

5. Noisy Operation:

- a. Check to make sure the fan blade is rotating freely.
- b. Check the compressor mounting to make sure the pins and clips are not rattling. If the compressor appears to be noisy internally, it must be replaced.

6. Restricted Or No Water Flow:

- a. Ensure water supply service stop valve is fully open.
- b. Verify minimum 20 psig supply line flow pressure.
- c. Check for twists or kinks in outlet tubing.
- d. Check the water inlet strainer. Sediment from the main supply can get trapped in the screen along with installation materials such as pipe dope and flux. The screen should be cleaned and checked on a regular basis and replace if needed.

**NOTE: STRAINER SCREEN MUST BE IN PLACE FOR WATER TO FLOW.**

- e. The cartridge valve located in the water control assembly or bubbler can also become clogged with foreign material. The cartridge valve can only be replaced and not repaired.
- f. Check flow adjustment. See start up note #3.
- g. The water chiller may also develop a freezing condition in which the water will become frozen inside the evaporator coil. This indicates a refrigeration problem or thermostat failure in which case the water chiller needs to be checked by a qualified technician.
- h. No power to transformer connections, loose or wires cut.

7. Water Drips Or Will Not Shut Off:

- a. Open fixture. Loosen nuts holding valve bracket assembly to bottom of fixture but do not remove. Move complete valve bracket assembly further back from the front push pad and tighten to lock in place.
- b. Replace valve cartridge.

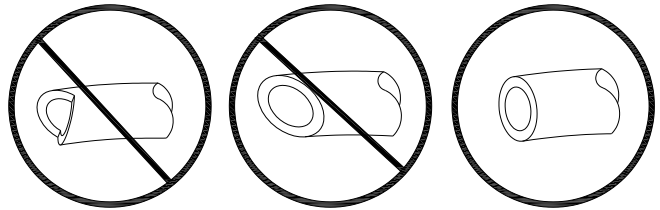


**PUSH-IN FITTING INSTALLATION**

NOTE: FITTINGS AND TUBE SHOULD BE KEPT CLEAN, BAGGED AND UNDEMANAGED PRIOR TO INSTALLATION.

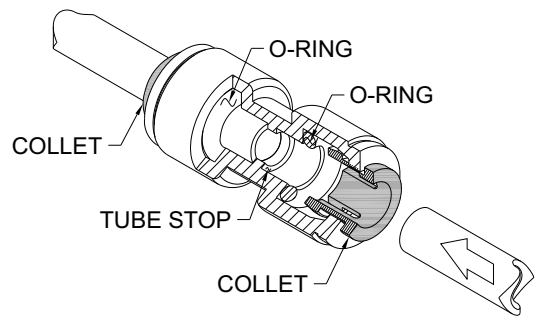
**TO CUT TUBE:**

Cut to fit length of 1/4" PE tubing and remove any burrs or sharp edges. Ensure that the outside diameter is free from score marks. Tube ends should be square.

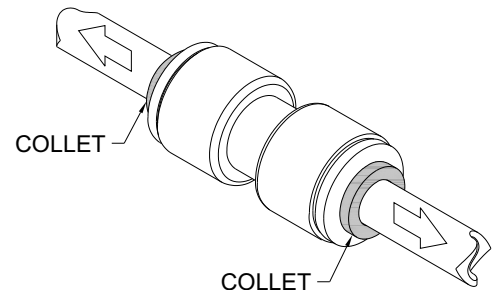


**INSERTING THE TUBE:**

1. Firmly and fully insert the tubing end into the push-in fitting up to the tube stop located approximately 1/2" deep.

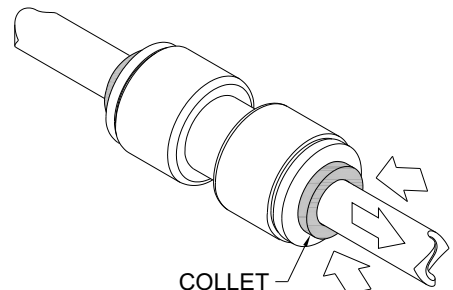


2. Pull on the fitted tubing to ensure it is secure. Tube should not come free from the fitting. Water test the connection assembly prior to leaving the site to ensure there are no leaks.



**DISCONNECTING THE TUBE:**

To disconnect the tube from the fitting ensure that the water line is depressurized. Push collet square towards the push-in fitting body and hold. While holding the collet in, pull on the PE tubing to remove from the push-in fitting.

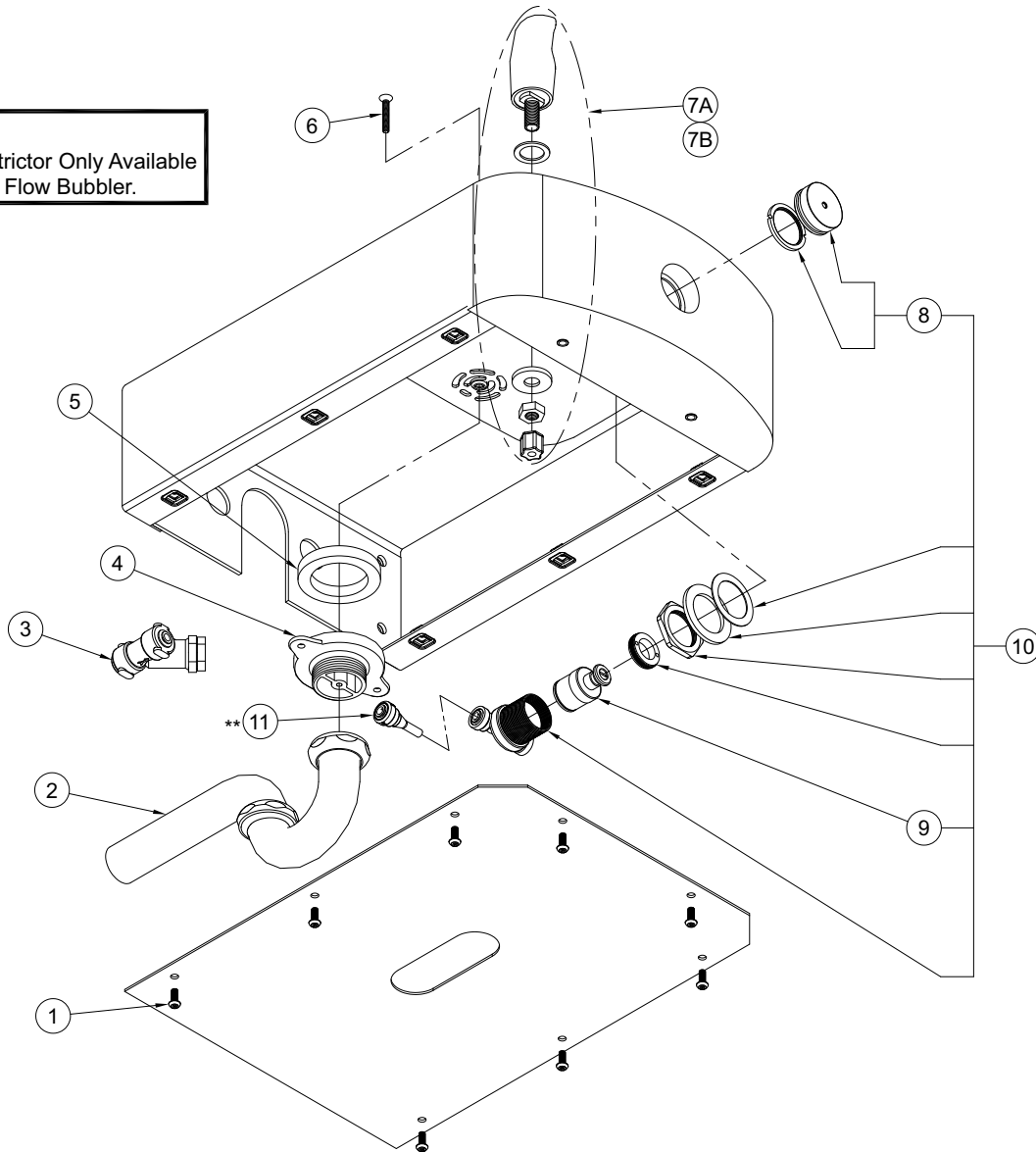


**CHILLER PARTS BREAKDOWN**

Reference installation manual included with in-wall chiller for appropriate Chiller Parts Breakdown.

**FOUNTAIN PARTS BREAKDOWN**

**NOTE:**  
\*\* Flow Restrictor Only Available  
With Low Flow Bubbler.



ITEM #	PART NUMBER	DESCRIPTION	ITEM #	PART NUMBER	DESCRIPTION
1	0112-002-000	#10-32 x 1/2" C/R Button Head Screw	7A	7000-012-001	Stainless Steel Bubbler Assembly
2	7000-015-000	1-1/4" O.D. P-Trap Assembly	7B	7000-099-002	Flexible Gray Bubbler Assembly
3	7000-021-002	"Y" Strainer Assembly	8	7000-068-001	Retaining Ring & Button Assembly
4	7000-005-199	Drain Adapter	9	7000-060-000	Valve Cartridge
5	7000-006-000	Drain Adapter Flat Gasket	10	7000-065-001	Recessed Pushbutton Valve Assembly
6	0152-010-000	#10-32 x 1" C/R Flathead Screw	11	7003-093-001	Flow Restrictor - Low-Flow Bubbler Only

Repairs must be made with Murdock Manufacturing parts only. Please order through your local representative or distributor. The phone number to locate your local representative is 1.800.591.9360.